

## JFC CONFORT



### CIRCULAR AXIAL JET FAN CONFORT

#### MANUFACTURING FEATURES:

The JFC CONFORT models are composed of an axial fan and two silencers.

#### FAN:

- Axial fan with reinforced tubular casing, made of steel sheet. The connection box is accessible by the side from a removable door.
- Standard asynchronous squirrel-cage motor with IP-55 protection and Class F insulation. Standard voltages 230/400V 50Hz for 1 speed motors and 400V 50Hz for 2 speed motors.

#### SILENCERS:

- Casing in galvanized steel. Inner duct made of perforated galvanized steel sheet.
- The silencers are filled with mineral wool with high acoustic absorption properties, preventing most of the fan noise to be propagated.
- Unidirectional JFC CONFORT UN is equipped with a protection guard at the inlet side and a deflector at the outlet. The deflector directs the air away from the ceiling and obstacles like beams or ducting, sweeping the whole volume of air to the closest extraction point.
- Reversible JFC CONFORT RE is equipped with protection guards on both sides.

## Accessories



AVT



INT



INT  
400

#### APPLICATIONS:

- Conceived for car parkings and large spaces where polluted air, needs to be removed effectively.
- An optimized design minimizes the height needed for their installation and assures a silent operation.
- Maximum working temperature: 60°C.

## Technical data

### Three-phase motor

Code	Model	R.P.M.	Rated I. A 400V	Rated power kW	Max. Airflow m <sup>3</sup> /h	Sound db (A)**	Weight kg	Connect. diagram
274300198ST	JFC 315 T2 UN CONFORT	2780	1,36	0,55	4.500	55	91	1
274310198ST	JFC 315/H T2 UN CONFORT	2860	2,39	1,10	5.430	58	93	1
274350198ST	JFC 355 T2 UN CONFORT	2780	1,36	0,55	5.240	60	99	1
274360198ST	JFC 355/H T2 UN CONFORT	2860	2,39	1,10	6.910	58	101	1
274400198ST	JFC 400 T2 UN CONFORT	2860	2,39	1,10	8.470	63	121	1
274410198ST	JFC 400/H T2 UN CONFORT	2825	3,14	1,50	9.330	65	128	1

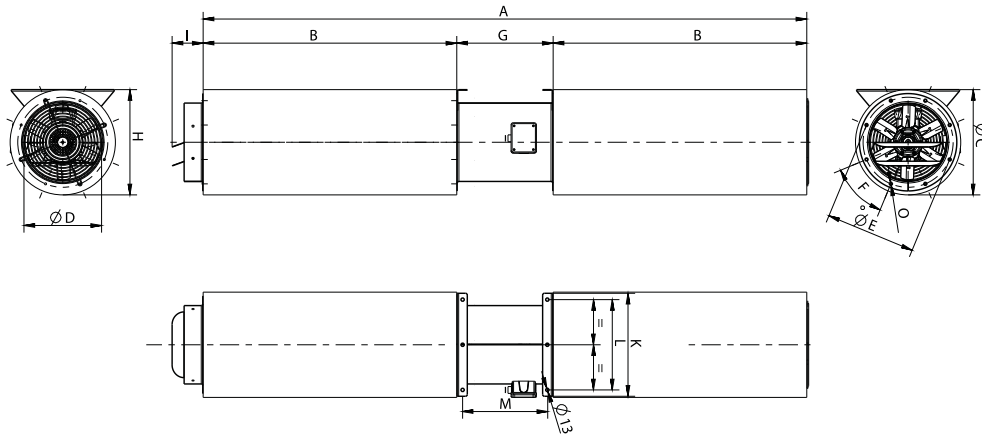
### 2 speed motor

Code	Model	R.P.M.	Rated I. A 400V	Rated power kW	Max. Airflow m <sup>3</sup> /h	Sound db (A)**	Weight kg	Connect. diagram
274300298ST	JFC 315 T2/T4 UN CONFORT	2850	1,45/0,47	0,55	4.500	55	91	2
274310298ST	JFC 315/H T2/T4 UN CONFORT	2850	2,36/0,59	1,10	5.430	58	93	2
274350298ST	JFC 355 T2/T4 UN CONFORT	2850	1,45/0,47	0,55	5.240	60	99	2
274360298ST	JFC 355/H T2/T4 UN CONFORT	2850	2,36/0,59	1,10	6.910	58	101	2
274400298ST	JFC 400 T2/T4 UN CONFORT	2850	2,36/0,59	1,10	8.470	63	121	2
274410298ST	JFC 400/H T2/T4 UN CONFORT	2880	3,45/1,14	1,50	9.330	65	128	2

**Notes:**

\*\* Total sound pressure level at the point of maximum flow measured in dB(A) in the suction measured in free field at a distance of 6m from the source

## Dimensions



Model	A	B	F	G	H	I	K	L	M
JFC 315 T2 UN CONFORT	1788,5	720	8x45 <sup>º</sup>	348,5	415	122	406	356	301
JFC 315 T2/T4 UN CONFORT	1788,5	720	8x45 <sup>º</sup>	348,5	415	122	406	356	301
JFC 315/H T2 UN CONFORT	1788,5	720	8x45 <sup>º</sup>	348,5	415	122	406	356	301
JFC 315/H T2/T4 UN CONFORT	1788,5	720	8x45 <sup>º</sup>	348,5	415	122	406	356	301
JFC 355 T2 UN CONFORT	1833,5	720	8x45 <sup>º</sup>	393,5	455	122	461	411	345,5
JFC 355 T2/T4 UN CONFORT	1833,5	720	8x45 <sup>º</sup>	393,5	455	122	461	411	345,5
JFC 355/H T2 UN CONFORT	1833,5	720	8x45 <sup>º</sup>	393,5	455	122	461	411	345,5
JFC 355/H T2/T4 UN CONFORT	1833,5	720	8x45 <sup>º</sup>	393,5	455	122	461	411	345,5
JFC 400 T2 UN CONFORT	1880	720	8x45 <sup>º</sup>	440	500	122	506	456	392
JFC 400 T2/T4 UN CONFORT	1880	720	8x45 <sup>º</sup>	440	500	122	506	456	392
JFC 400/H T2 UN CONFORT	1880	720	8x45 <sup>º</sup>	440	500	122	506	456	392
JFC 400/H T2/T4 UN CONFORT	1880	720	8x45 <sup>º</sup>	440	500	122	506	456	392

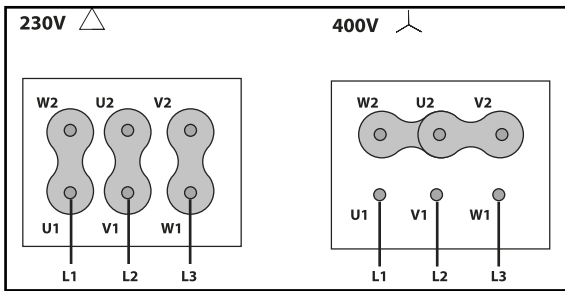
Model	O	Thrust (N)	ØC	ØD	ØE
JFC 315 T2 UN CONFORT	M8	25	415	306	355
JFC 315 T2/T4 UN CONFORT	M8	25/6	415	306	355
JFC 315/H T2 UN CONFORT	M8	36	415	306	355
JFC 315/H T2/T4 UN CONFORT	M8	36/8	415	306	355
JFC 355 T2 UN CONFORT	M8	26	455	361	395
JFC 355 T2/T4 UN CONFORT	M8	26,6	455	361	395
JFC 355/H T2 UN CONFORT	M8	45	455	361	395
JFC 355/H T2/T4 UN CONFORT	M8	45/11	455	361	395
JFC 400 T2 UN CONFORT	M8	53	500	401	450
JFC 400 T2/T4 UN CONFORT	M8	53/13	500	401	450

Model	O	Thrust (N)	ØC	ØD	ØE
JFC 400/H T2 UN CONFORT	M8	64	500	401	450
JFC 400/H T2/T4 UN CONFORT	M8	64/16	500	401	450

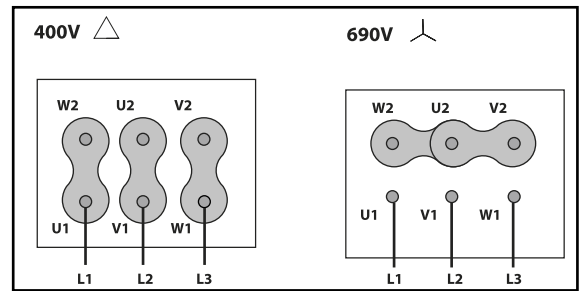
# Wiring diagram

## Wiring diagram N° 1

230/400V

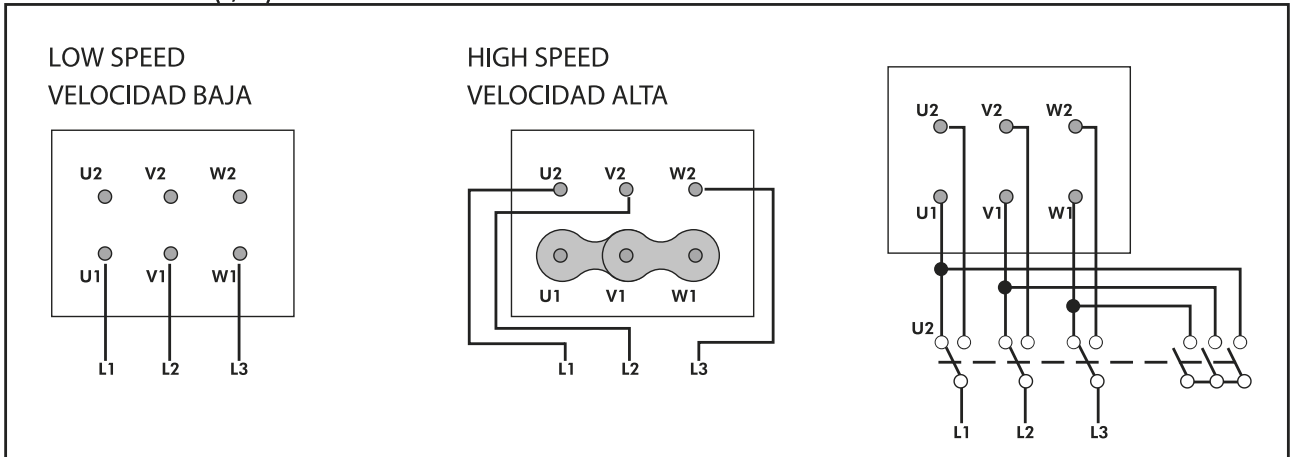


400/690V



## Wiring diagram N° 2

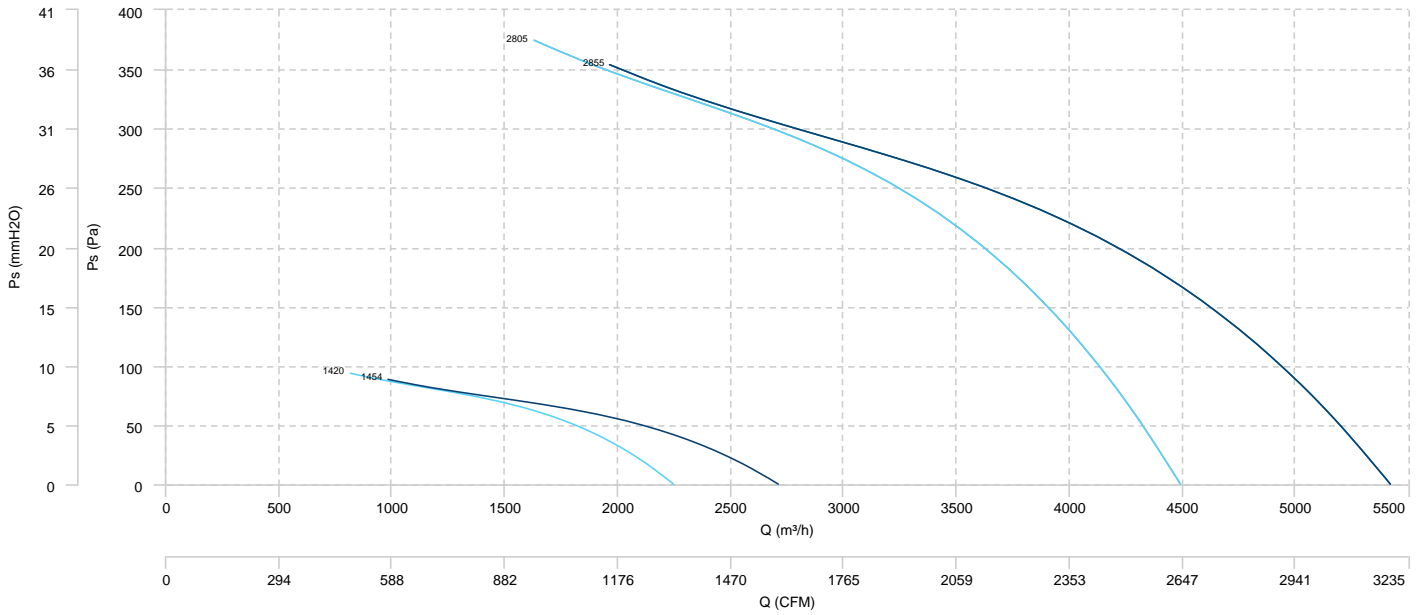
400V DAHLANDER (Y,YY)



# CHARACTERISTIC CURVE

JFC 315 T2 UN CONFORT	JFC 315 T2/T4 UN CONFORT	JFC 315/H T2 UN CONFORT	JFC 315/H T2/T4 UN CONFORT
-----------------------	--------------------------	-------------------------	----------------------------

## AIR FLOW - PRESSURE



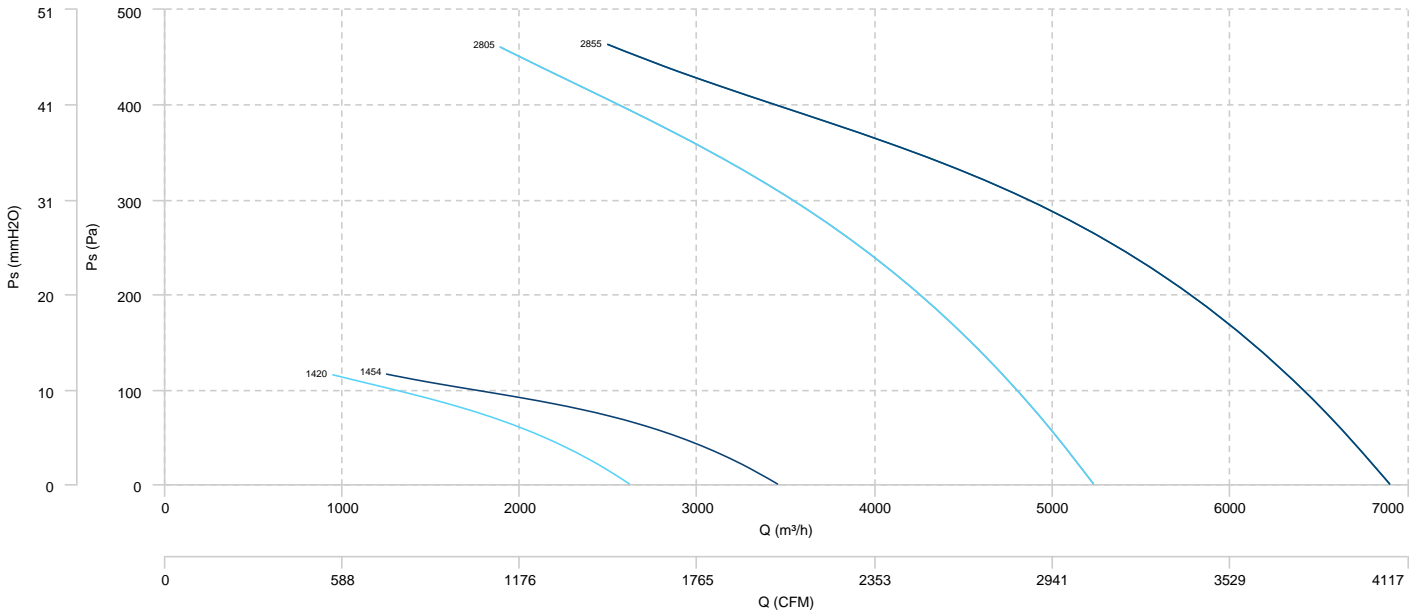
JFC 355 T2 UN CONFORT

JFC 355 T2/T4 UN CONFORT

JFC 355/H T2 UN CONFORT

JFC 355/H T2/T4 UN CONFORT

## AIR FLOW - PRESSURE



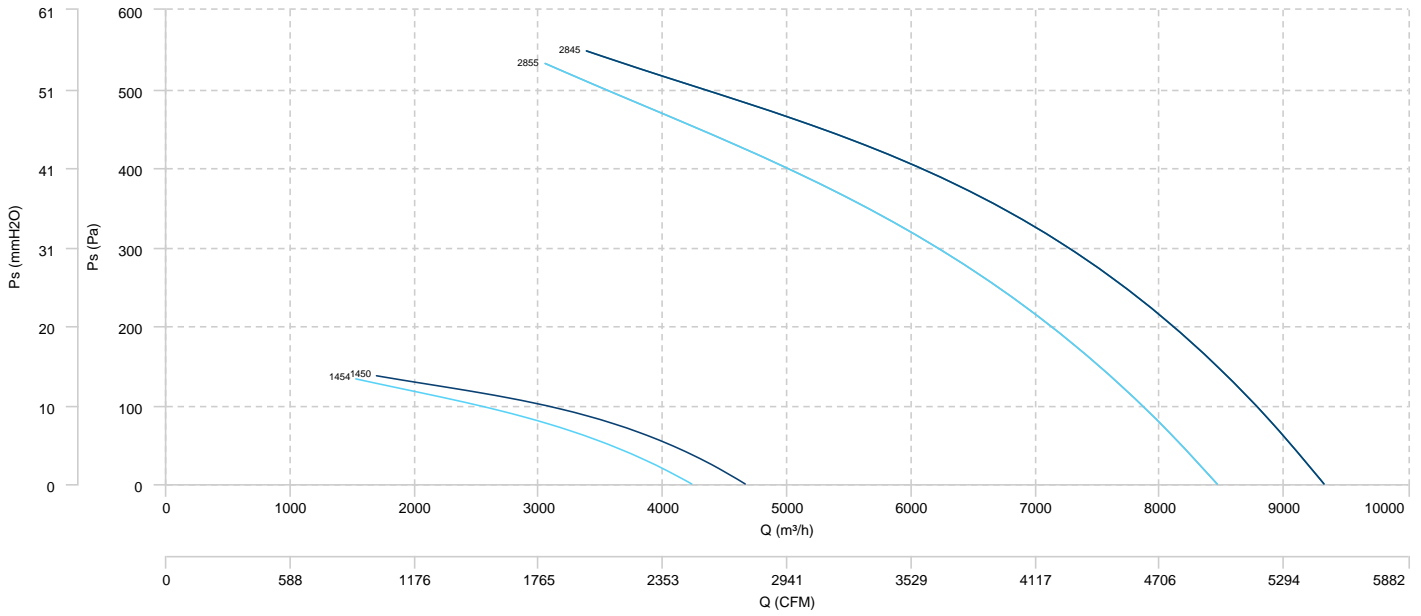
JFC 400 T2 UN CONFORT

JFC 400 T2/T4 UN CONFORT

JFC 400/H T2 UN CONFORT

JFC 400/H T2/T4 UN CONFORT

## AIR FLOW - PRESSURE





## Sound data

Sound power Lw dB (A)										
Model		63 Hz	125 Hz	250 Hz	500 Hz	1000 Hz	2000 Hz	4000 Hz	8000 Hz	Total
JFC 315 T2 UN CONFORT	Inlet	75	73	71	73	71	71	73	69	81
JFC 315 T2/T4 UN CONFORT (1420)	Inlet	59	57	55	57	55	56	57	53	65
JFC 315/H T2 UN CONFORT	Inlet	78	76	76	74	74	73	74	70	84
JFC 315/H T2/T4 UN CONFORT (1454)	Inlet	62	61	60	59	58	57	58	54	68
JFC 355 T2 UN CONFORT	Inlet	80	78	77	78	76	75	76	74	86
JFC 355 T2/T4 UN CONFORT (1420)	Inlet	64	62	61	62	60	59	60	58	70
JFC 355/H T2 UN CONFORT	Inlet	79	77	75	74	73	73	74	71	84
JFC 355/H T2/T4 UN CONFORT (1454)	Inlet	63	61	60	59	57	57	58	55	68
JFC 400 T2 UN CONFORT	Inlet	85	81	80	77	77	77	78	73	89
JFC 400 T2/T4 UN CONFORT (1454)	Inlet	69	65	64	62	61	61	62	57	73
JFC 400/H T2 UN CONFORT	Inlet	87	83	82	79	79	79	80	75	91
JFC 400/H T2/T4 UN CONFORT (1450)	Inlet	71	67	66	64	63	63	64	59	75

**Notes:**

\* To calculate the sound power level at different rpm from those indicated above, use the following formula:

$$Lw \text{ dB(A)}_{rpmA} = Lw \text{ dB(A)}_{rpmB} + 52.5 \cdot \log_{10} \frac{rpmA}{rpmB}$$